

Ecovenue

The

Theatres

Trust



European Regional
Development Fund
Investing in your future

Putting Sustainability Centre Stage -
Practical tips to improve your venue's performance

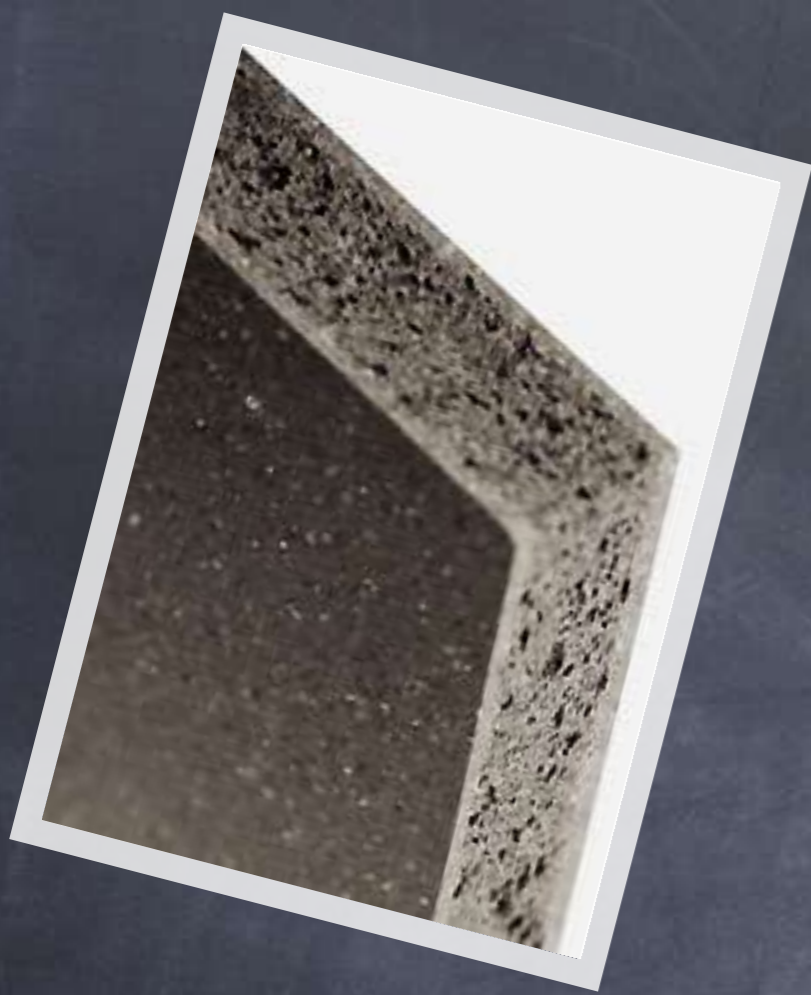


10 - Check your WEEE - you'll be surprised!

(what you can't throw out)



9 - Innovate!

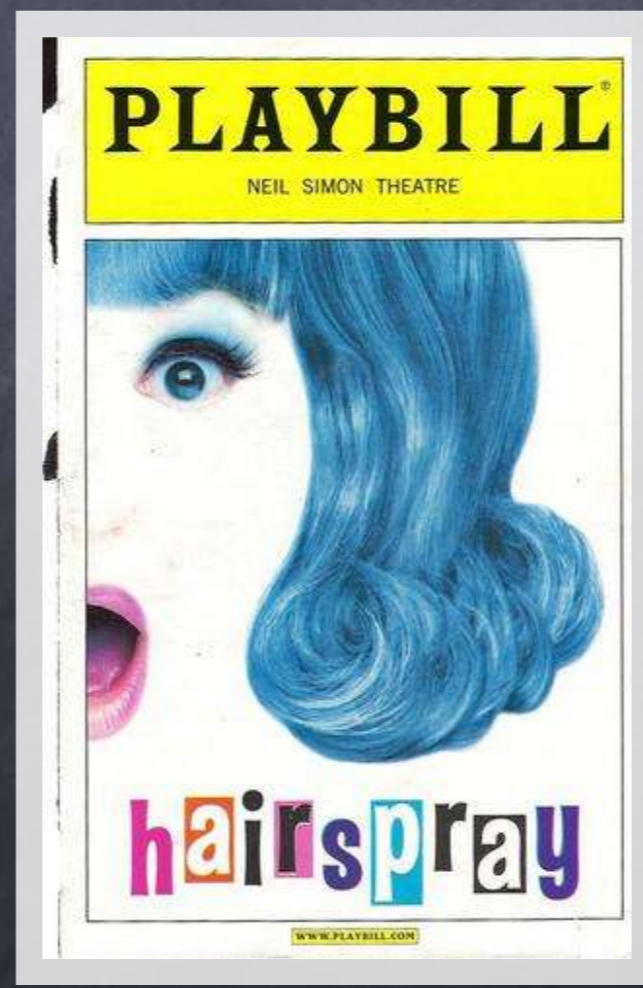


8 - Join the Theatres DEC Pool/Julies Bicycle Green Database

TheatresDECPool@theatrust.org.uk

7 - Tell everybody

(take out a page in the programme...)



6 - Turn the lights off (!)

- (possibly automatically)
- Get a stage door contactor



5 - Check your hot water tank timers

- At least monthly
- Investigate 'early off' options
- (but remember Legionella legislation)



4 - Develop a meaningful Environmental Policy

3 - Change your bulbs

- (do the maths, and prepare to tolerate some whingeing)
- All energy saving bulbs are not the same!



kg CO2e per year	Cost per day	Cost per week	Cost per month	Cost per year	running cost per year
1,834	£0.90	£5.38	£23.31	£279.68	£339.77

kg CO2e per year	Cost per day	Cost per week	Cost per month	Cost per year	running cost per year	Initial investment	Payback period (years)
336	£0.16	£0.99	£4.27	£51.27	£101.52	£201.30	0.8

3 - Change your bulbs

- (do the maths, and prepare to tolerate some whingeing)
- All energy saving bulbs are not the same!



2 - Learn your building (services)

- Boilers
- Fans
- Timers, building management systems & thermostats
- Switches/breakers





A.O. SMITH WATER PRODUCTS COMPANY

A DIVISION OF A. O. SMITH CORPORATION



MODEL BFM 80 G
 SERIAL NUMBER 000701098202002/4
 DESTINATION U.K. & IRELAND
 TYPE C13/C33
 CATEGORY II2H3+
 NOM. HEAT INPUT (L.V.) 75 kW
 CONTENTS 253 ltr
 MAX. WORKING PRESSURE 8 bar

STANDARD SET FOR G20: 20 mbar
 PRE-PRESSURE 12.5 mbar
 ELECTRICAL SUPPLY 220/240VAC-50Hz-100W-

MANUFACTURER: A.O. SMITH W.P.C.
 P.O. BOX 70 NL-5500 AB V
 CE-(PIN) 63AR3916

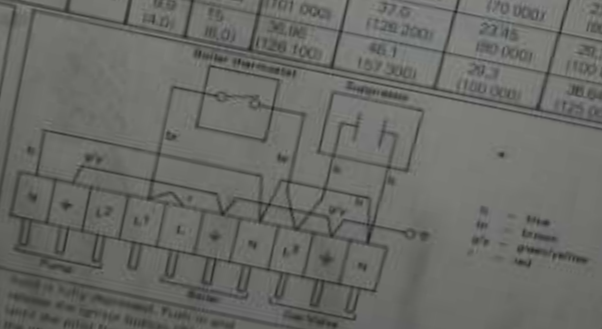
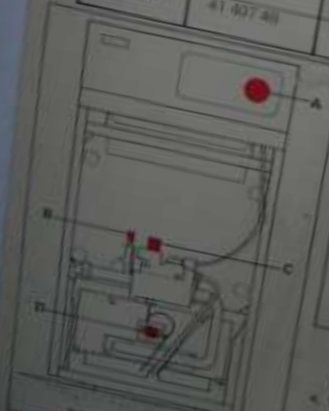
REAL EXICO SUPER

BOILER LABEL

Electrical Data
 Supply Single phase
 Max. external fuse value 20A/250V AC
 10 A
 3 A

H 19 STELRAD GROUP
 H.0309(1) 4/82

Model No.	British Gas Appliance No.	Burner Injector		Manifold Pressure (in. w.g.)		Heat Input kW (Btu/hr)		Heat Output kW (Btu/hr)	
		Type	Size	min.	max.	min.	max.	min.	max.
RS. 65	41 407 41	CAT. 23	950	10.2 (4.1)	13.8 (5.5)	21.00 (71 000)	24.50 (83 800)	16.12 (55 000)	19.05 (65 000)
RS. 75	41 407 43	CAT. 23	1050	9.3 (3.7)	14.3 (5.7)	23.00 (78 500)	28.30 (96 200)	17.60 (59 000)	22.00 (75 000)
RS. 80	41 407 45	CAT. 23	1100	11.5 (4.6)	15.0 (5.7)	26.70 (89 000)	30.25 (103 200)	20.50 (69 000)	25.45 (86 000)
RS. 100	41 407 47	CAT. 10	1400	9.0 (3.6)	14.1 (5.4)	30.45 (103 900)	36.10 (122 300)	23.45 (79 000)	29.30 (100 000)
RS. 125	41 407 48	CAT. 23	1700	10.5 (4.2)	15.3 (5.8)	38.10 (128 300)	46.70 (158 350)	29.30 (100 000)	36.64 (125 000)
CF. 65	41 407 40	CAT. 33	950	8.0 (3.1)	12.6 (4.9)	20.40 (69 800)	24.19 (82 500)	16.12 (55 000)	19.05 (65 000)
CF. 75	41 407 42	CAT. 33	1100	8.7 (3.3)	14.1 (5.4)	22.56 (75 000)	28.2 (95 200)	17.6 (59 000)	22.0 (75 000)
CF. 80	41 407 44	CAT. 33	1150	8.2 (3.1)	10.9 (4.2)	26.84 (89 900)	30.8 (103 700)	20.5 (69 000)	25.45 (86 000)
CF. 100	41 407 46	CAT. 33	1300	8.5 (3.2)	12.9 (4.9)	29.6 (101 000)	37.0 (125 200)	22.95 (78 000)	29.3 (100 000)
CF. 125	41 407 48	CAT. 33	1500	9.9 (3.8)	15.0 (5.7)	36.06 (120 100)	46.1 (157 300)	29.3 (100 000)	36.64 (125 000)



BOILER CONTROLS

- When lighting the burner, ensure the gas control knob is in the 'OFF' position.
- Turn the gas control knob to the 'ON' position.
- Turn the burner selector knob to the 'ON' position.
- Turn the burner selector knob to the 'OFF' position.
- Turn the burner selector knob to the 'ON' position.

WIRING DIAGRAM

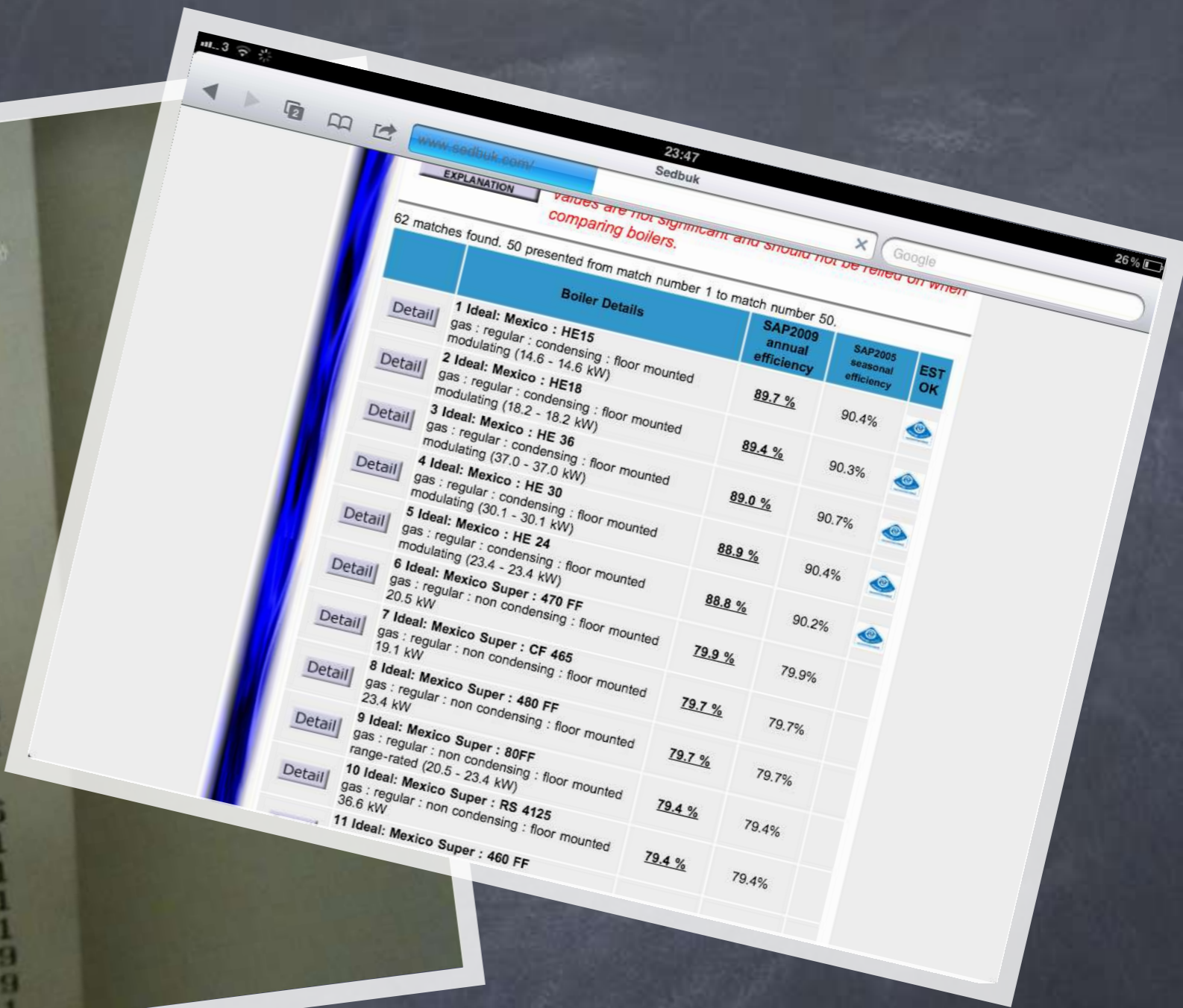
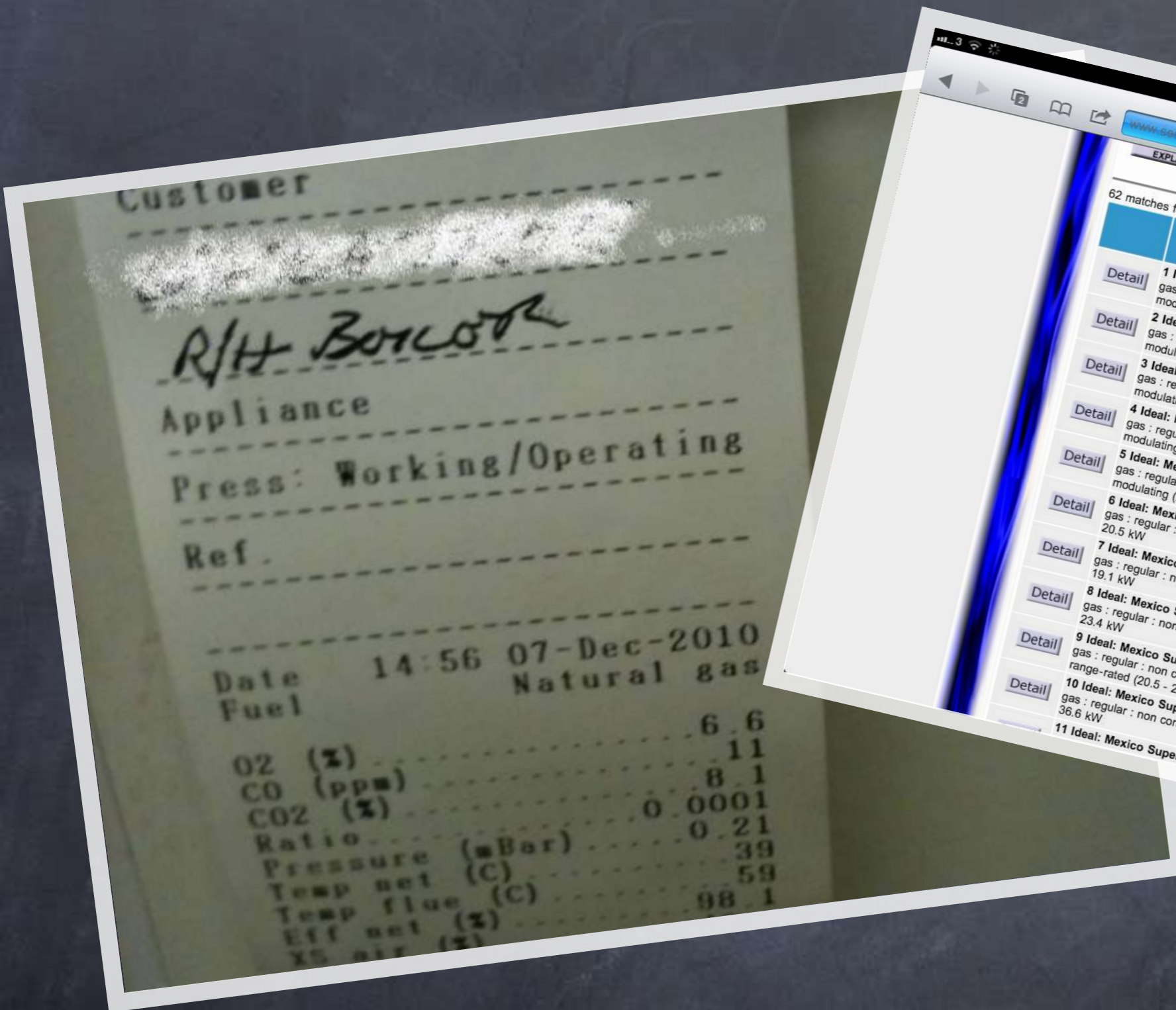
Wiring diagram showing connections for Gas Valve, Burner, and Control Knob. Legend: N - live, L - line, G/Y - gas valve, B - gas.

TO SHUT OFF THE BOILER

- Turn the gas control knob to the 'OFF' position.
- Turn the burner selector knob to the 'OFF' position.

CONTROL OF WATER TEMPERATURE

- Adjust the boiler thermostat to the required temperature.
- Turn the burner selector knob to the 'ON' position.



www.sedbuk.com



Air handling unit May 2007



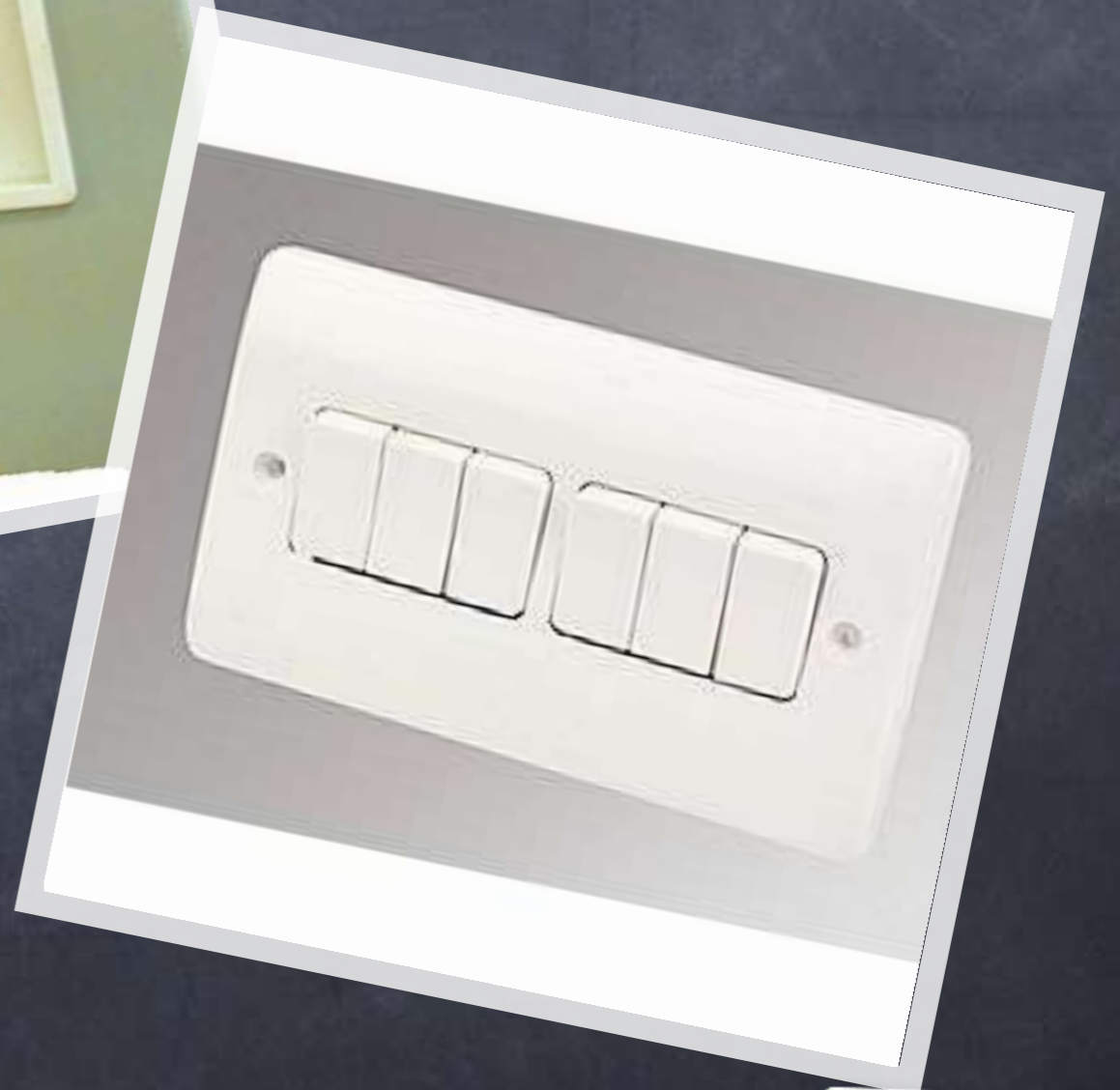
allaboutelectrics.co.uk



© processplantandmachinery.com



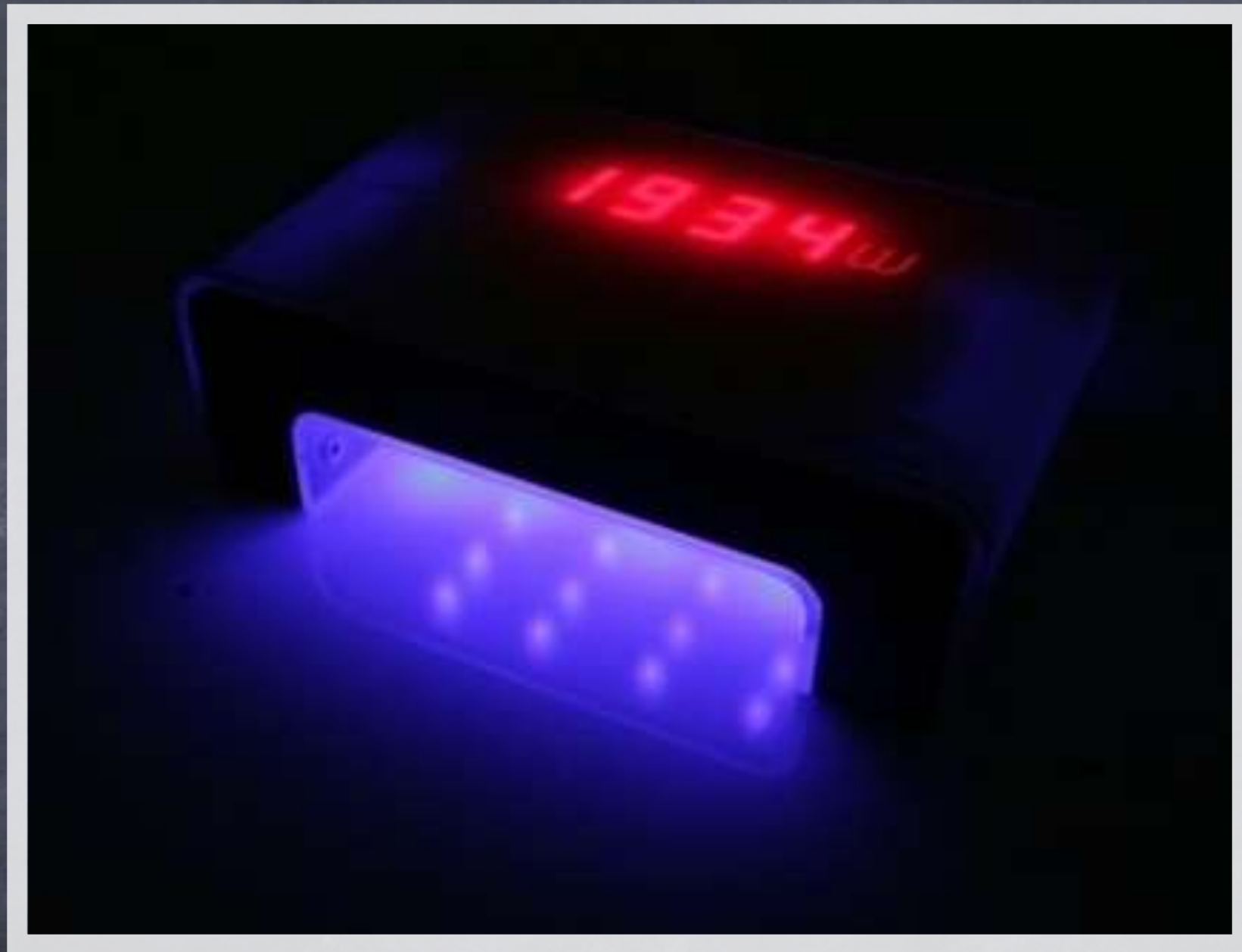




1 - Monitor your energy usage!

Monitoring your energy usage

- Find your meters, and work out which ones are which
- Note the readings once a week
- Use an online tool such as SMEasure to analyse weekly data
- Drill down into more detail....



Energy meter

Ecovenue Practical Sustainability Top 10

- 1 Monitor your energy usage www.smeasure.co.uk
- 2 Learn your building (services)
- 3 Change your bulbs
- 4 Develop a meaningful Environmental Policy
- 5 Check your hot water tank timers
- 6 Turn the lights off (!)
- 7 Tell everybody
- 8 Join the Theatres DEC Pool/Julie's Bicycle Green Database
- 9 Innovate!
- 10 Check your WEEE

Ecovenue

The
Theatres
Trust



Ecovenue

The

Theatres

Trust



European Regional
Development Fund
Investing in your future

www.ecovenue.org.uk

tim.atkinson@theatretrust.org.uk

@Ecovenue_TTT

