

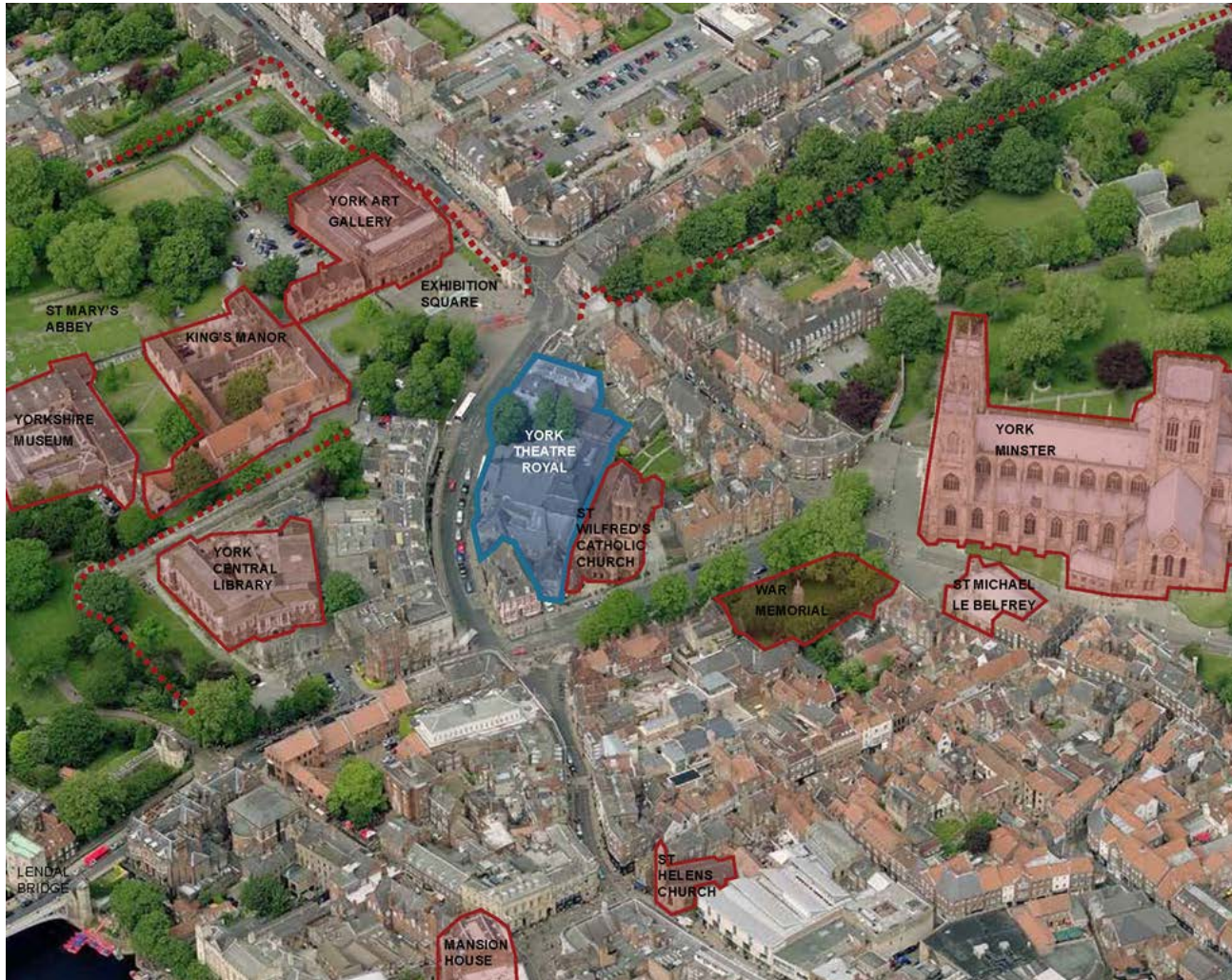


York Theatre Royal

# Part 1

## Before

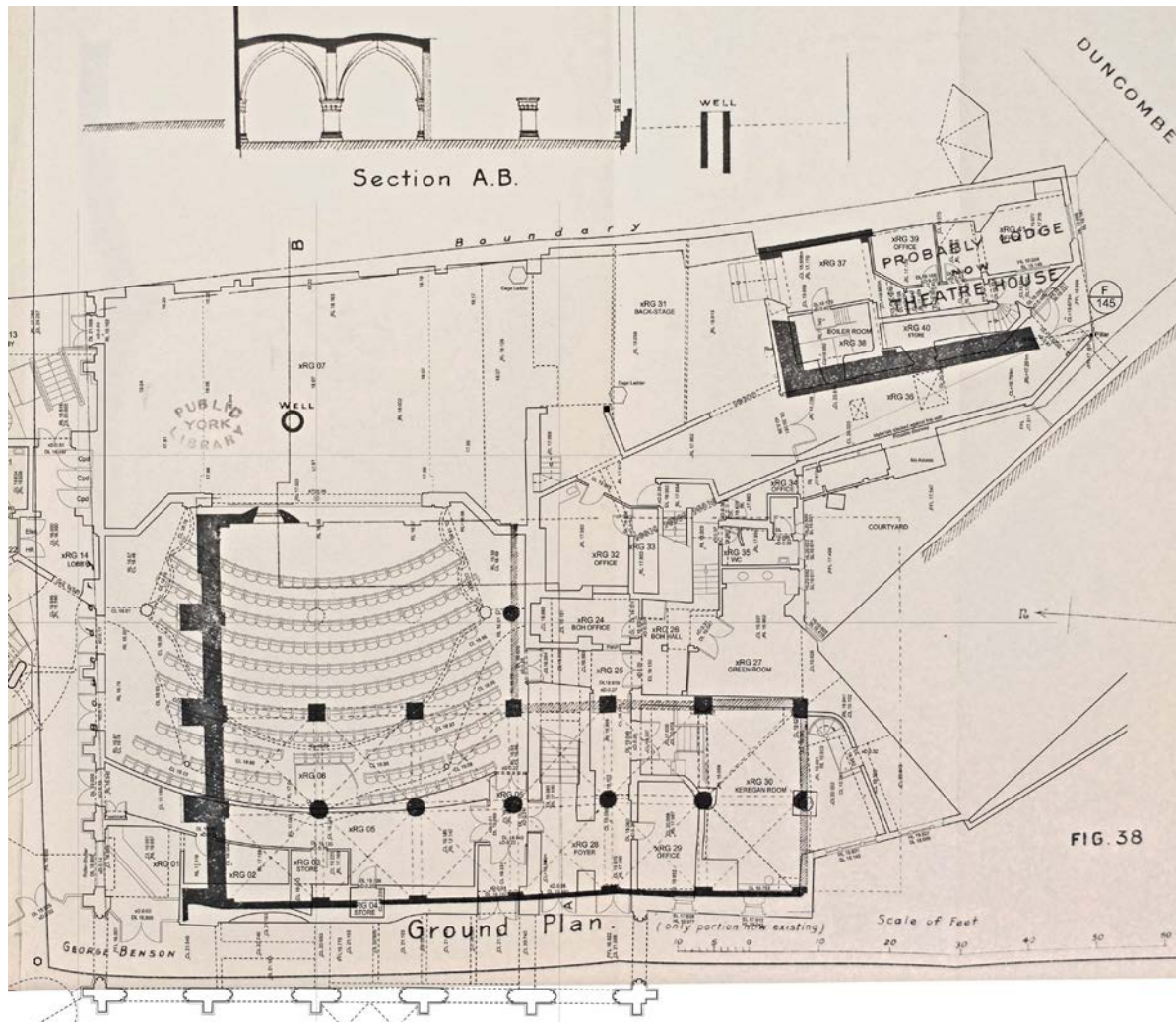
# York cultural quarter



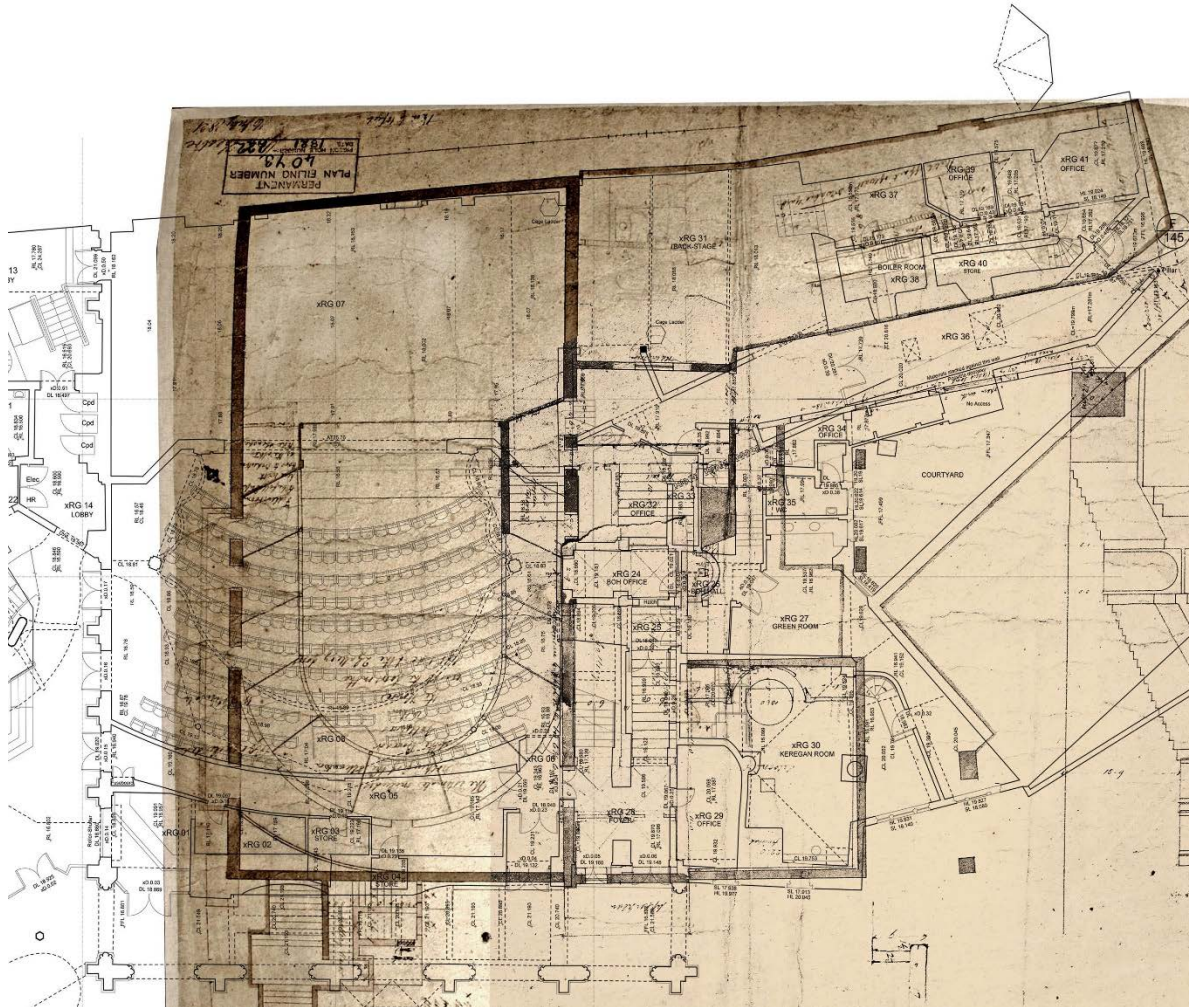
1744



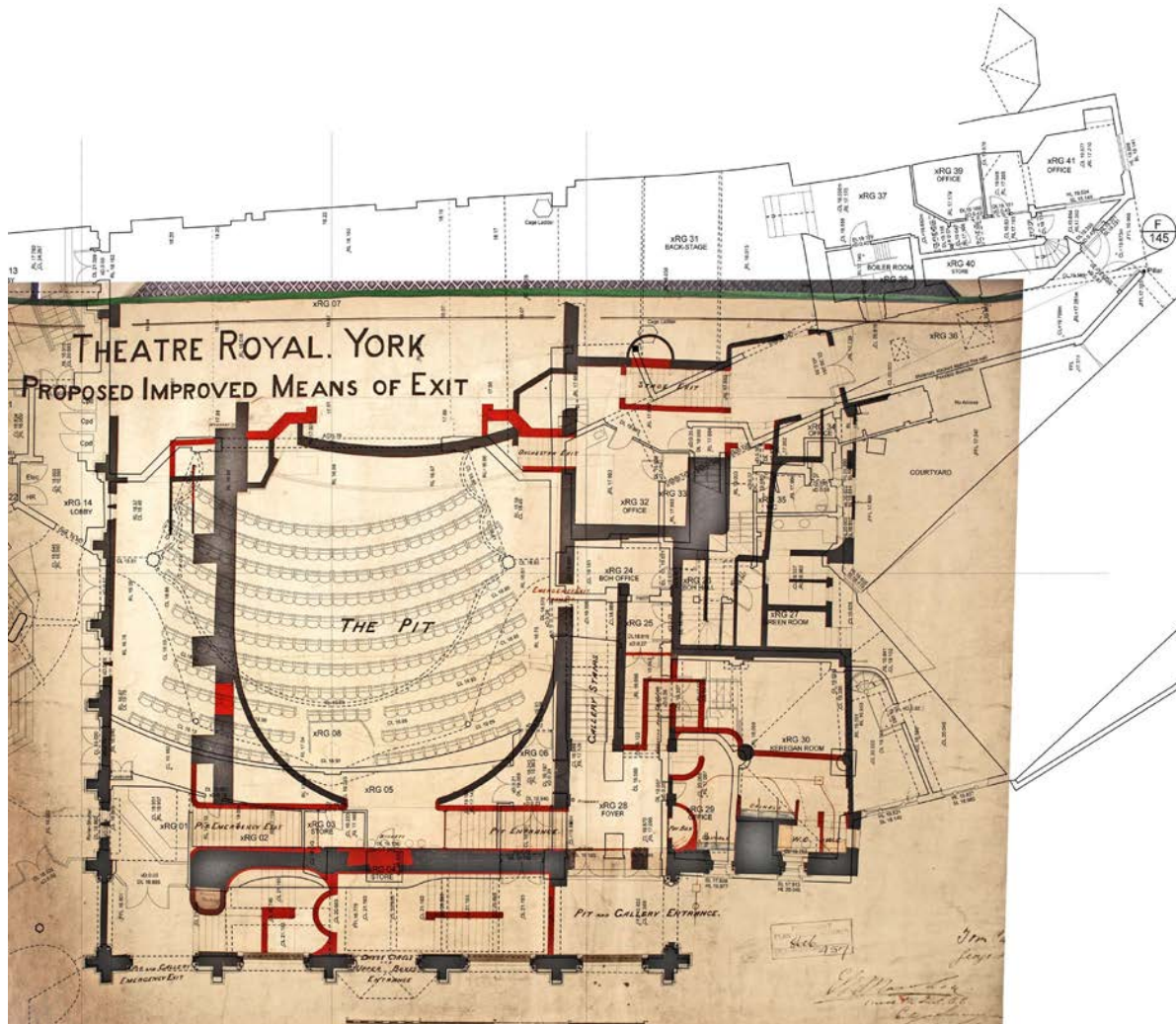
# Mediaeval Foundations



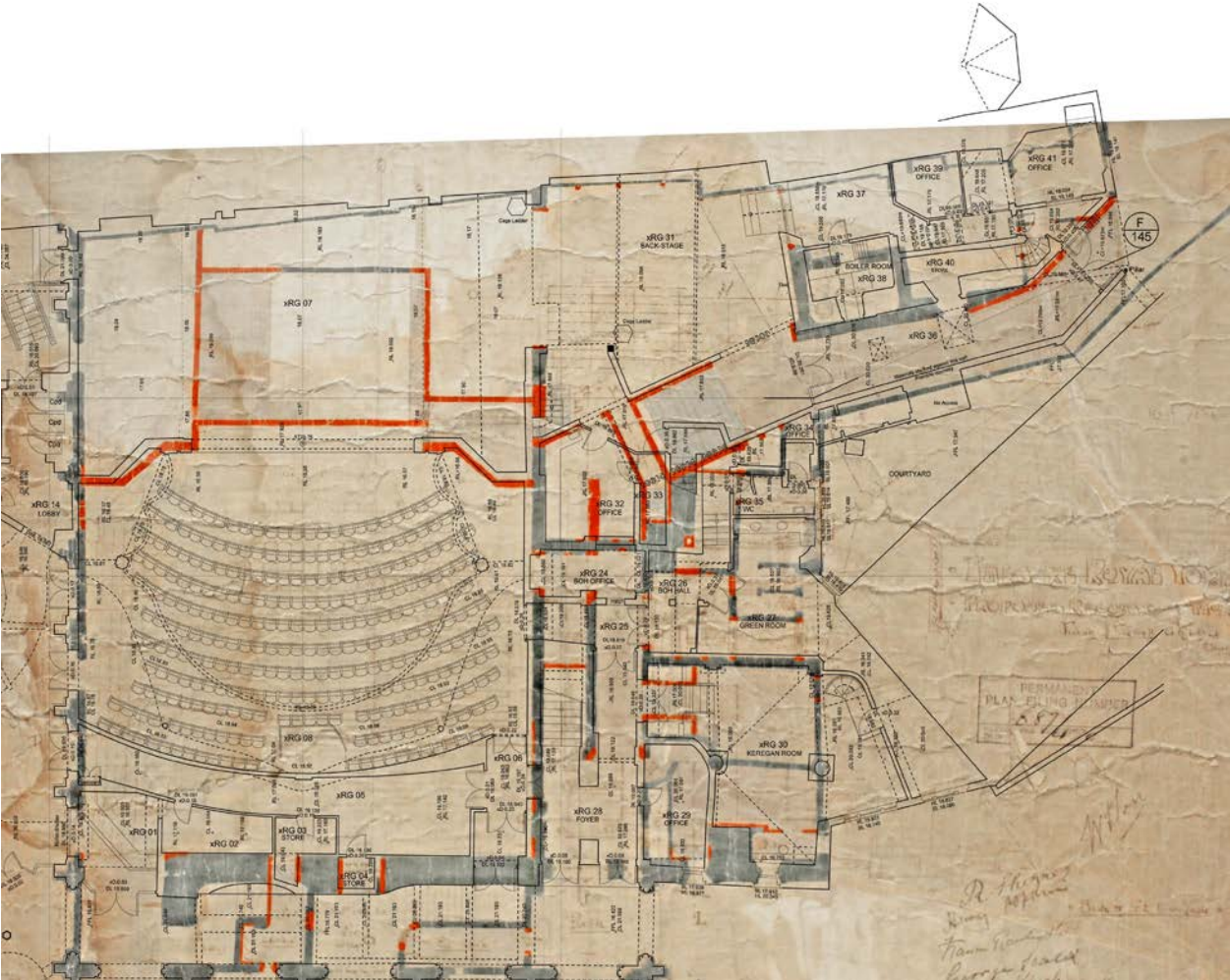
# Georgian Core



# Victorian Shell

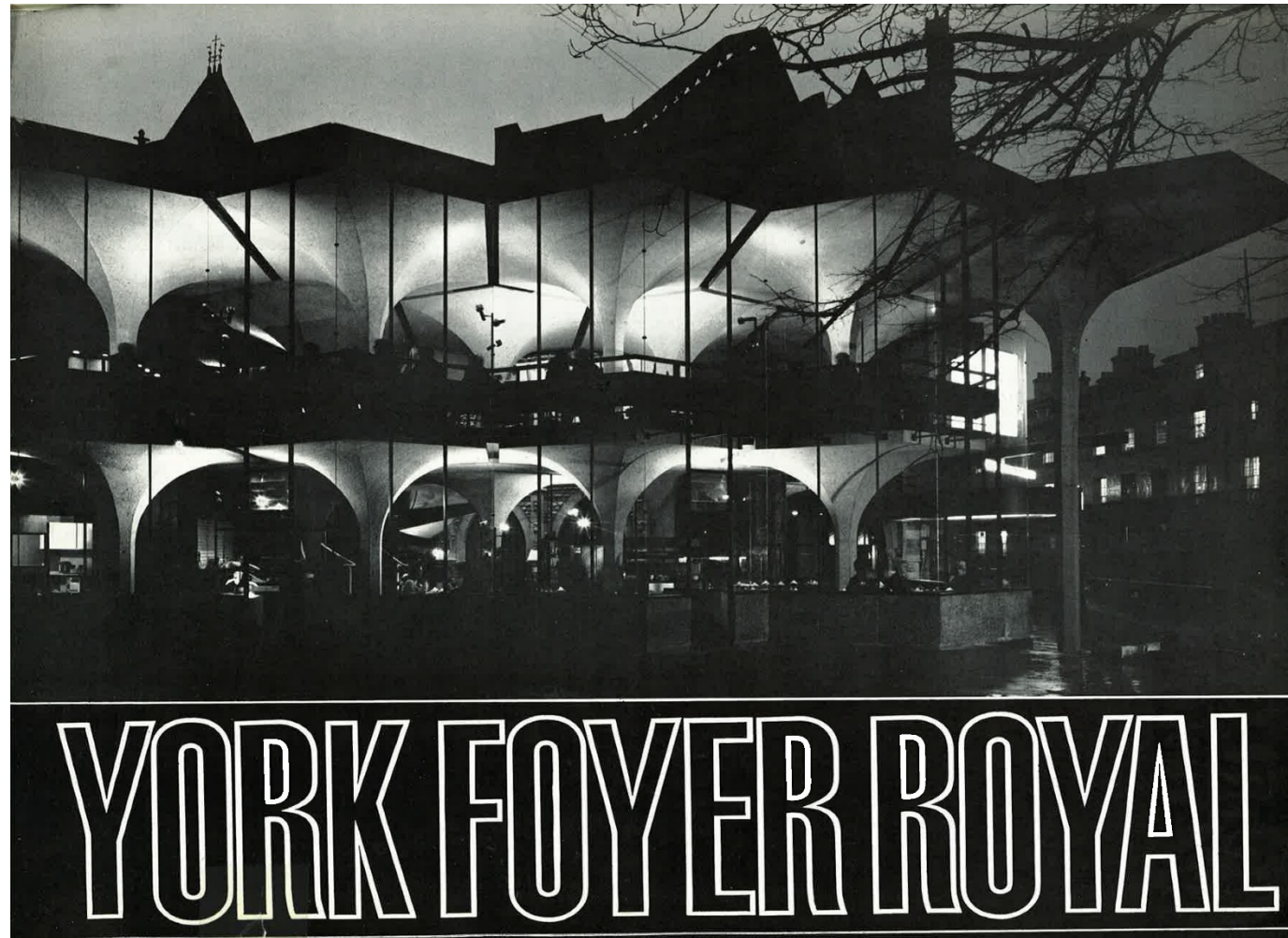


# Edwardian Improvements





Patrick Gwynne



## 1960's The birth of modern leisure



# 2013 - Years of incremental development



View from St. Leonard's Place coming from North



View of the Colonnade



View of the Garden between the 1967's extension and De Grey Rooms



View from St. Leonard's Place coming from South



View of Tate Wilkinson building and Theatre Get-In



View of Back Yard by Tate Wilkinson building

# Cluttered & no longer welcoming



View of the first floor Theatre Bar



View of the ground floor Cafe



View of the Stairs of the 1967's Foyer



View of the 1967's slatted wall



View of the wall between the 1967's Foyer and the Main House

# No longer fit for purpose



View from the Stage



View from the Gallery



View of temporary Orchestra Pit



View of the Stage looking towards the Wing Dock



View of the Fly Floor

# Part 2

## The Brief

## City as stage set



# Community groups





# A strong sense of belonging



## The Railway Children at King's Cross



# Wind in the Willows



# Ugly Duckling



# The Princess & the Pea




## 3 Key Steps to Sustainability & Resilience



IMPROVE THE CUSTOMER EXPERIENCE

- ✓ A better welcome
- ✓ Improved access
- ✓ Improving the audience experience in the main auditorium


x



CREATE THE CONTEXT FOR A SUSTAINABLE BUSINESS

- ✓ A more commercial front of house
- ✓ Efficiency and safety through improved backstage technical facilities and storage
- ✓ Reducing energy use by updating mechanical and electrical equipment

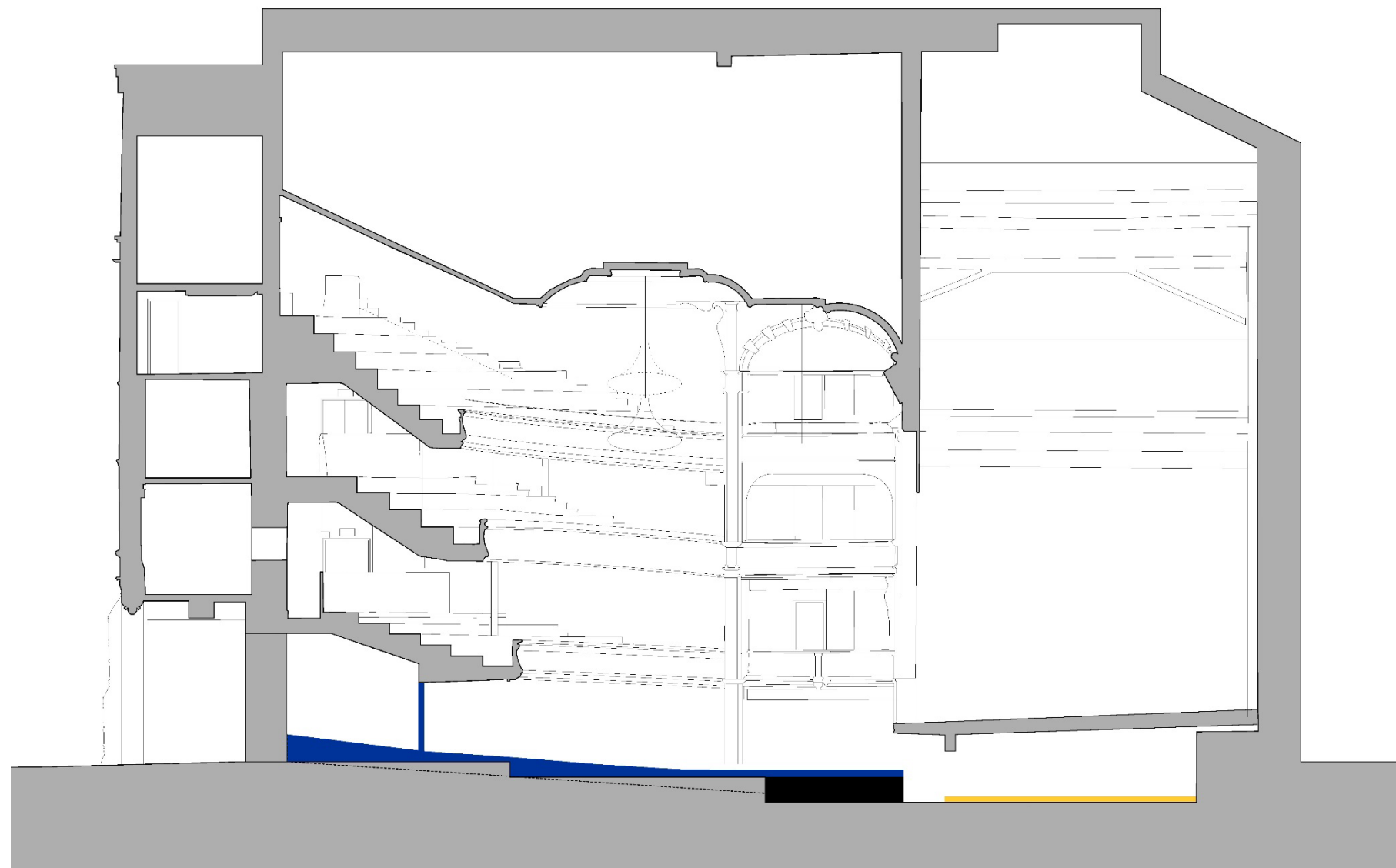
x



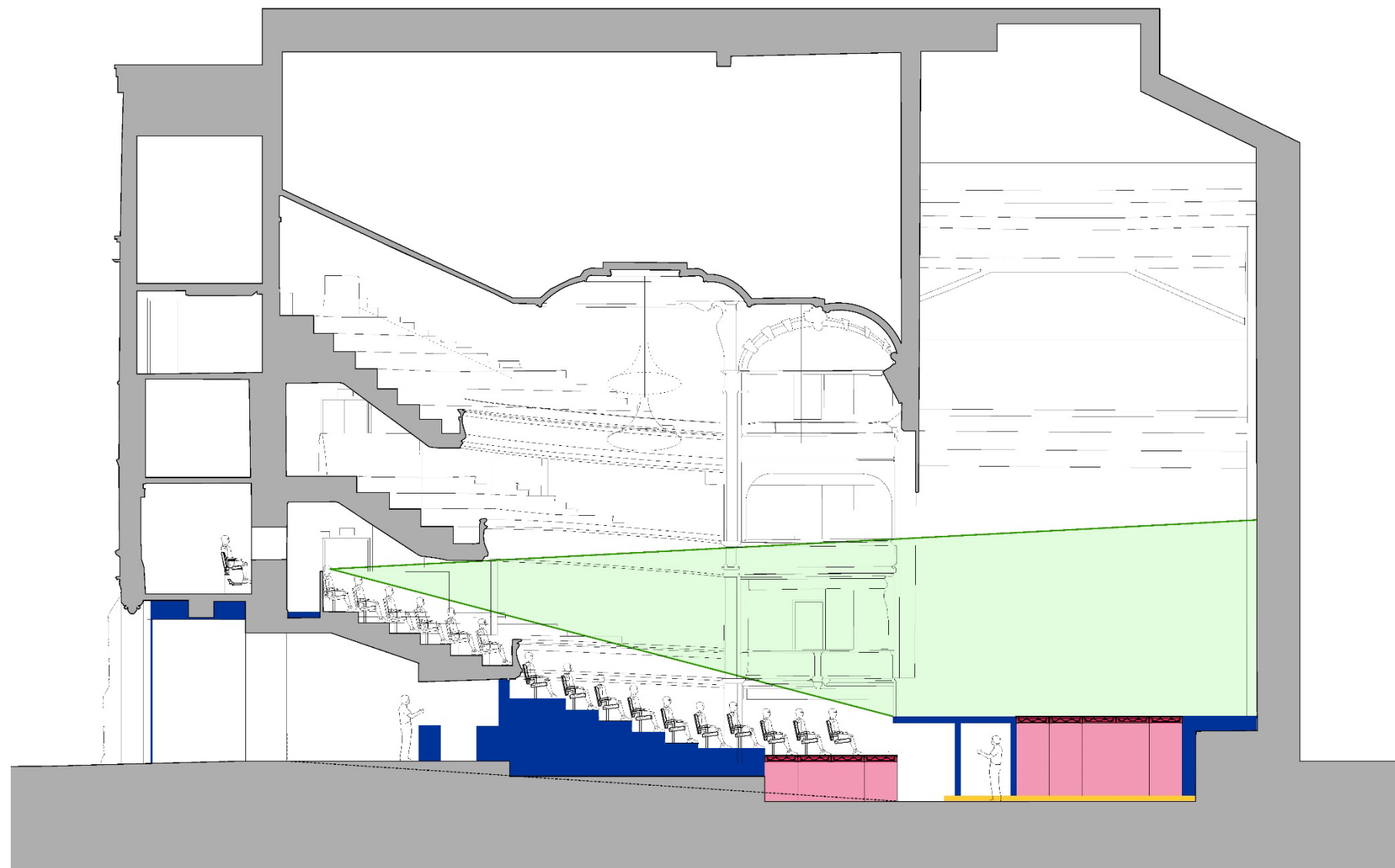
IMPROVE THE SCOPE FOR HIGH QUALITY CREATIVE OUTPUT

- ✓ Expanding the potential of the staging
- ✓ Improving acoustic separation between the main spaces
- ✓ Tell the story of YTR better – both past and present

Before

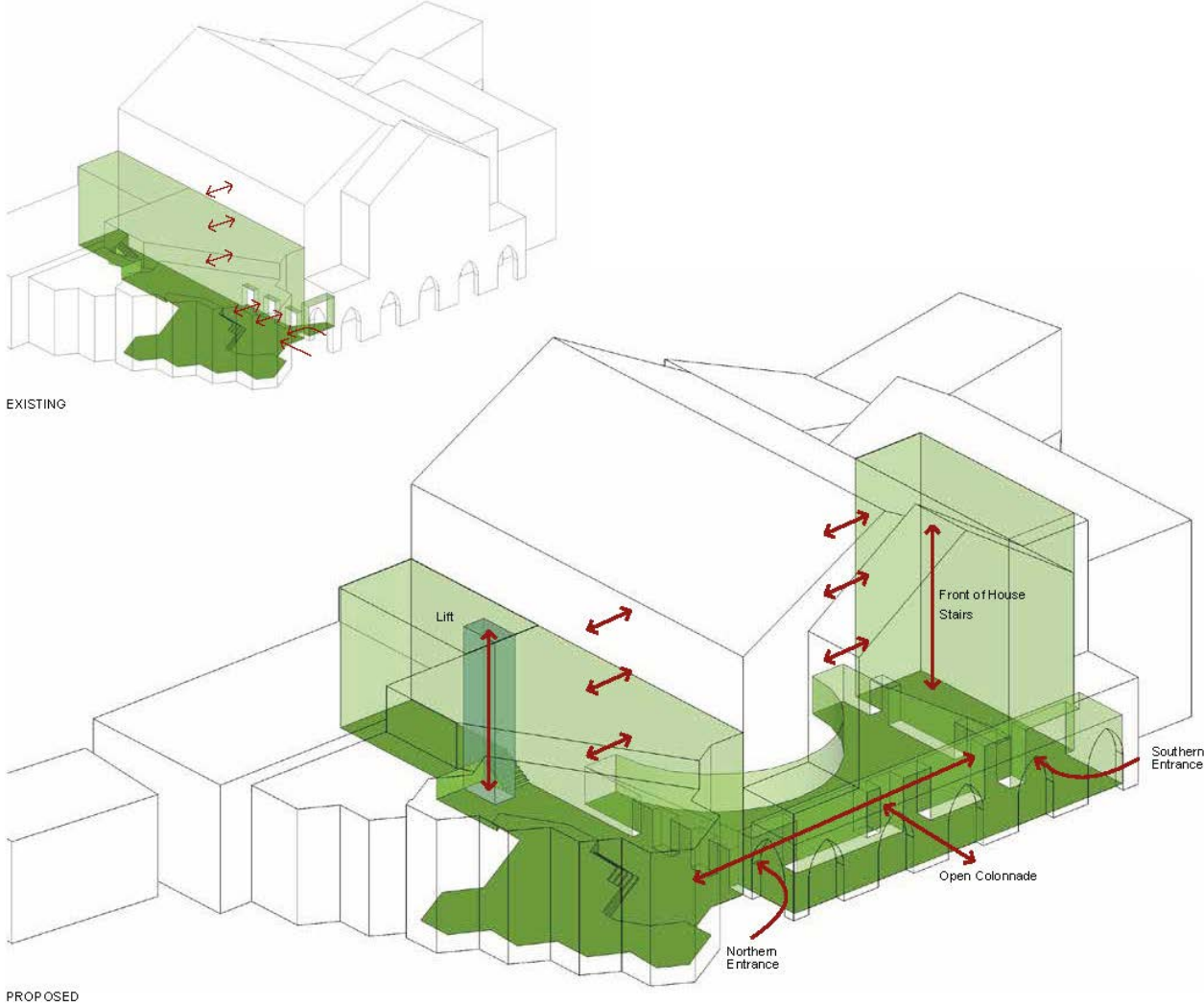


After

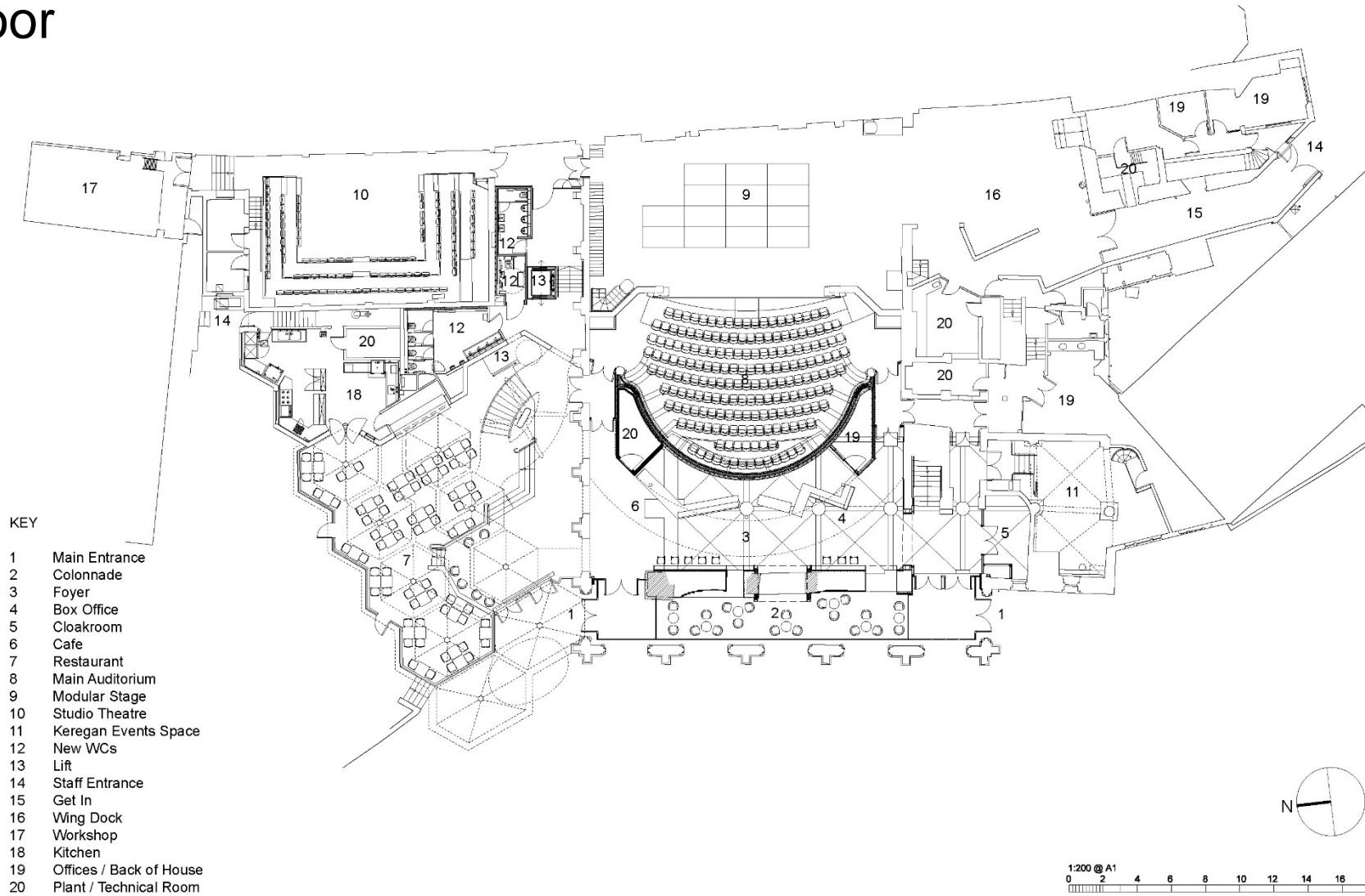




# Discover unused space and make new connections



# Ground Floor



# Part 3

## The Changes

## Under-utilised frontage



## New civic storefront



## Before: Colonnade



## After: Colonnade



## After: Improved welcome

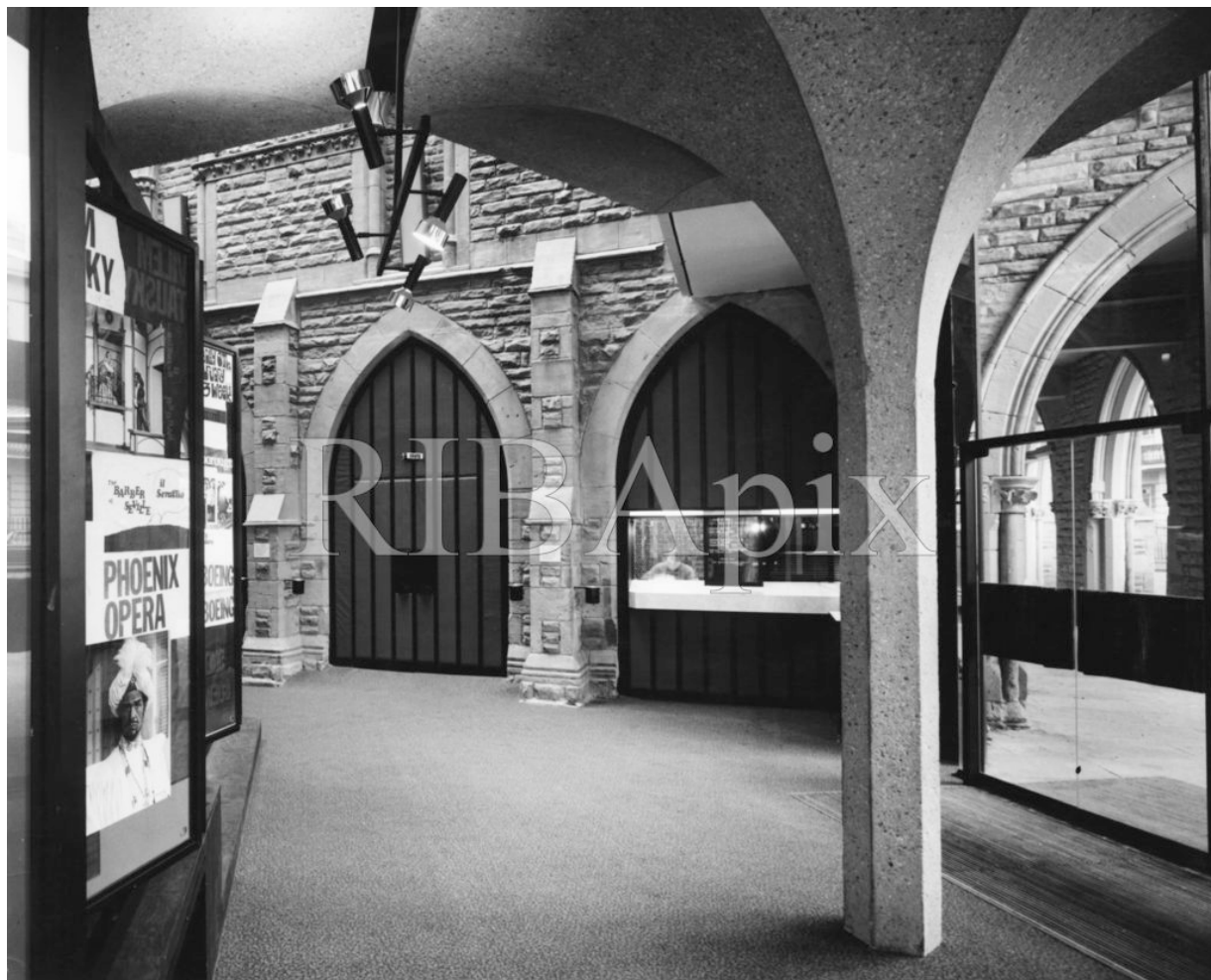




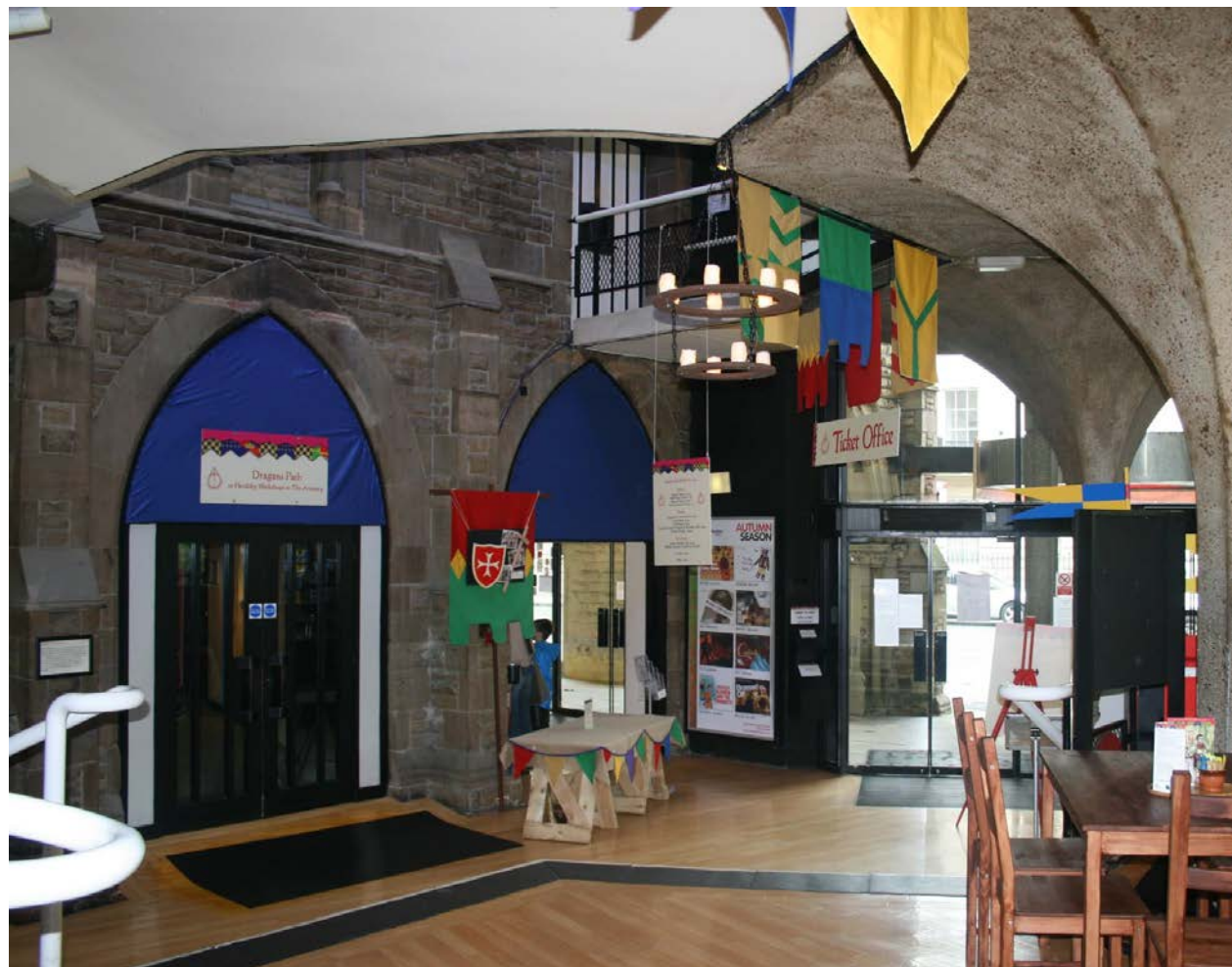
## After: Colonnade Cafe



## Before: 1967 Foyer

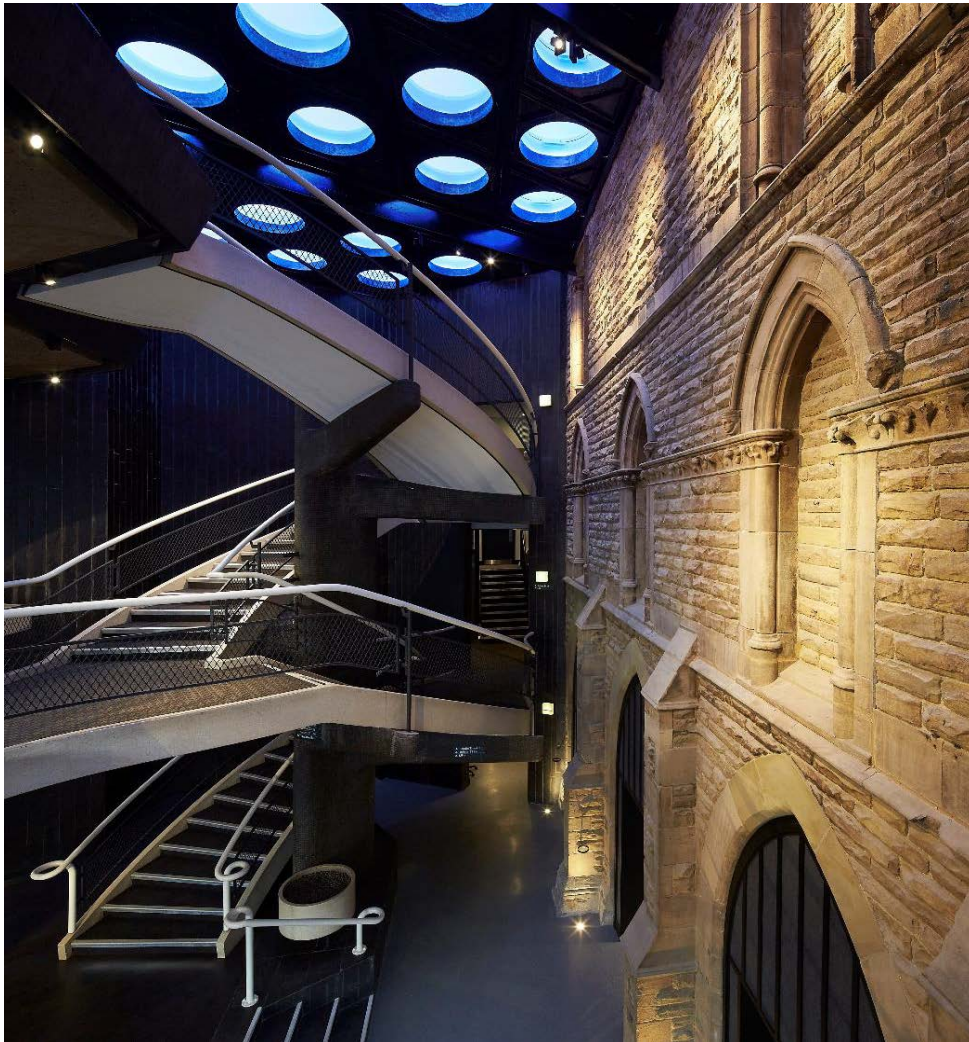


York Theatre Royal



Theatres Trust Conference 2017 | People, Places & Spaces: Designing Democratic Theatres

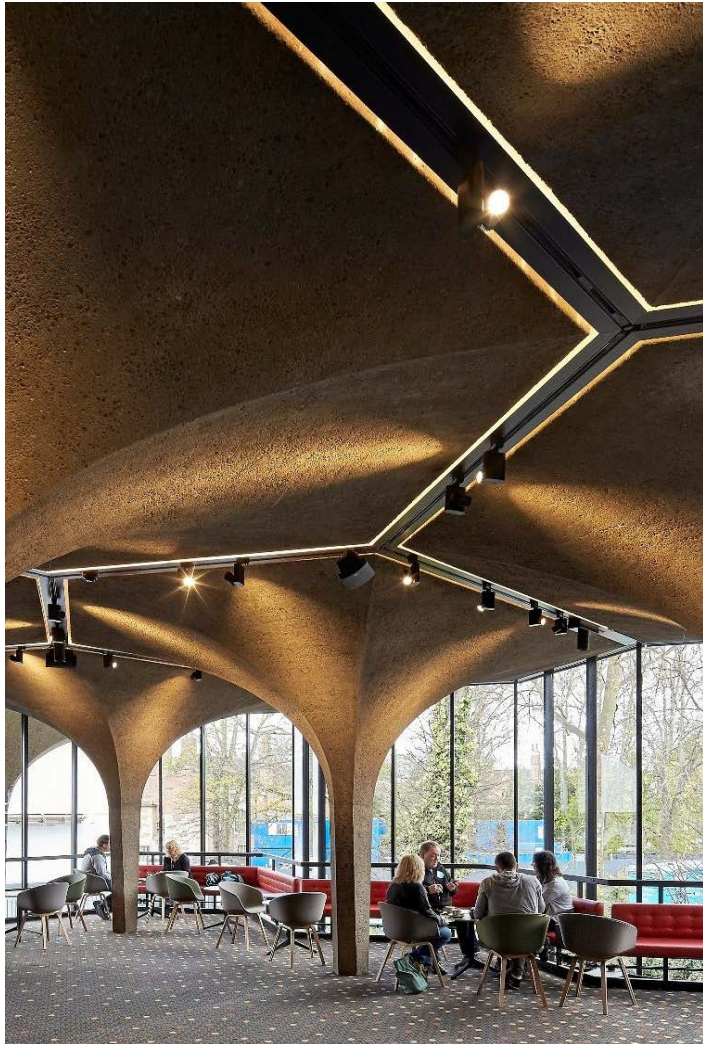
## After: Foyer



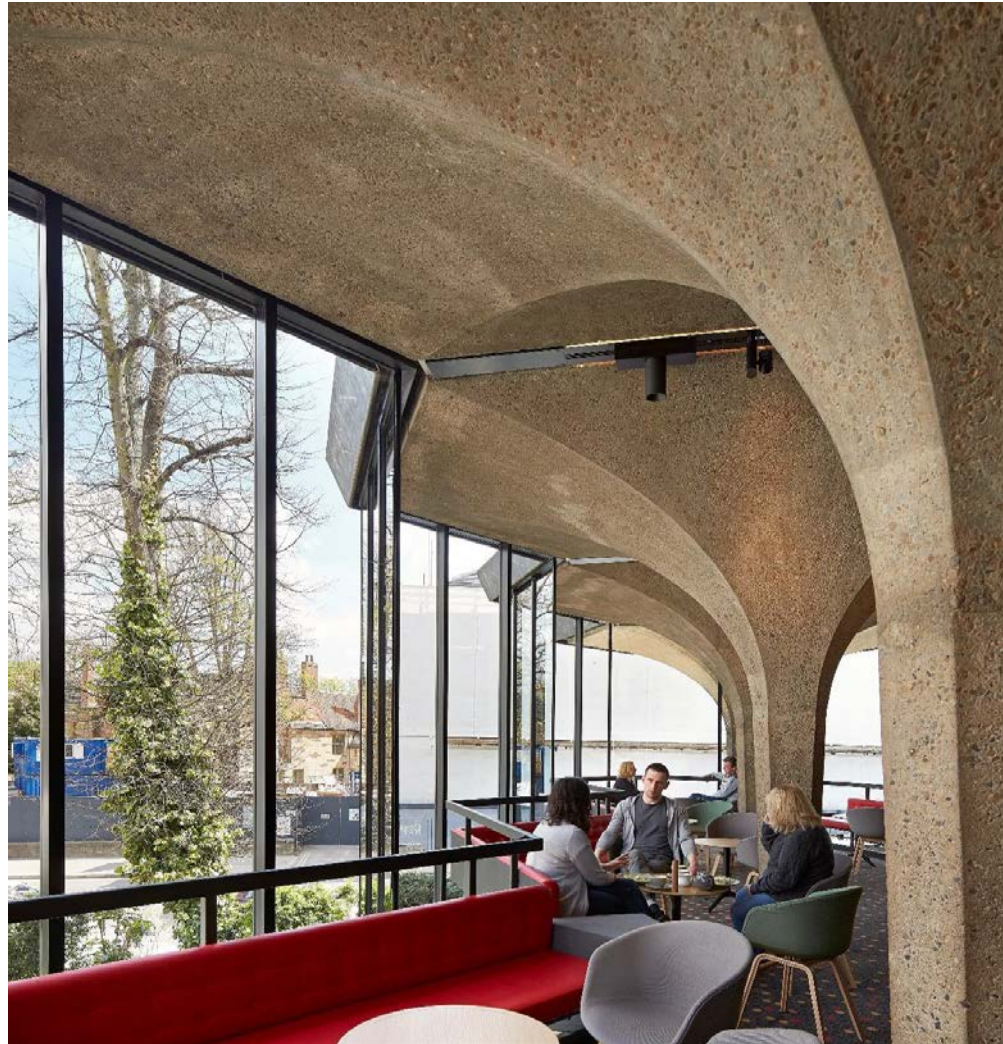
## After: Bistro



## After: Theatre Bar



York Theatre Royal



Theatres Trust Conference 2017 | People, Places & Spaces: Designing Democratic Theatres

## After: Gallery



## After: Main House



## After: Main House





# Part 4

# After

# Everything is possible



# Pride & Prejudice



## Murder, Margaret & Me



# Sherlock Holmes



## Tenant of Wildfell



# The Pulverised

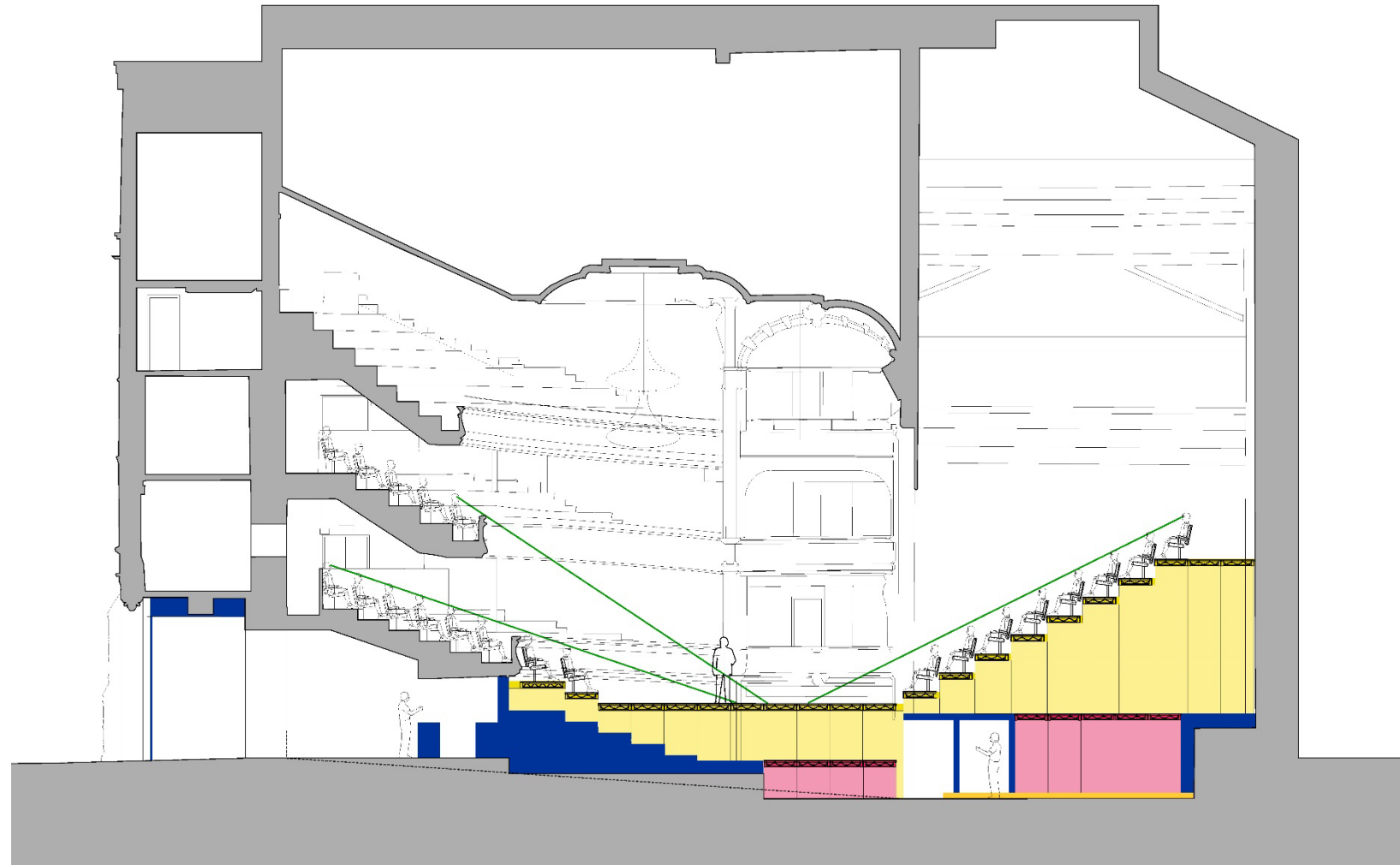


# Part 5

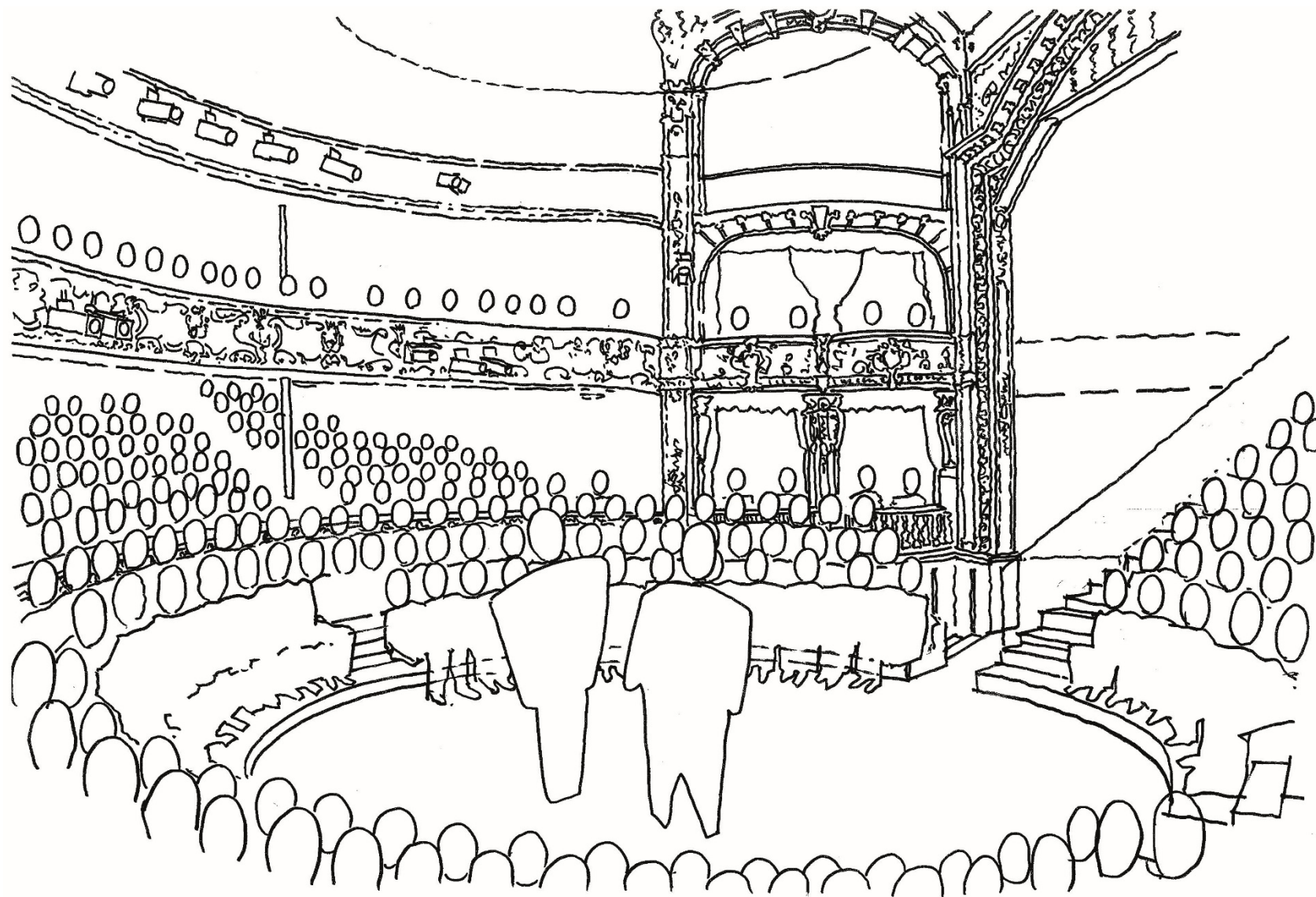
## Where to now?



# A space full of creative possibilities



# In the Round



# Moon Dog



# Youth Theatre



York Theatre Royal



Theatres Trust Conference 2017 | People, Places & Spaces: Designing Democratic Theatres

# Youth Theatre





York Theatre Royal