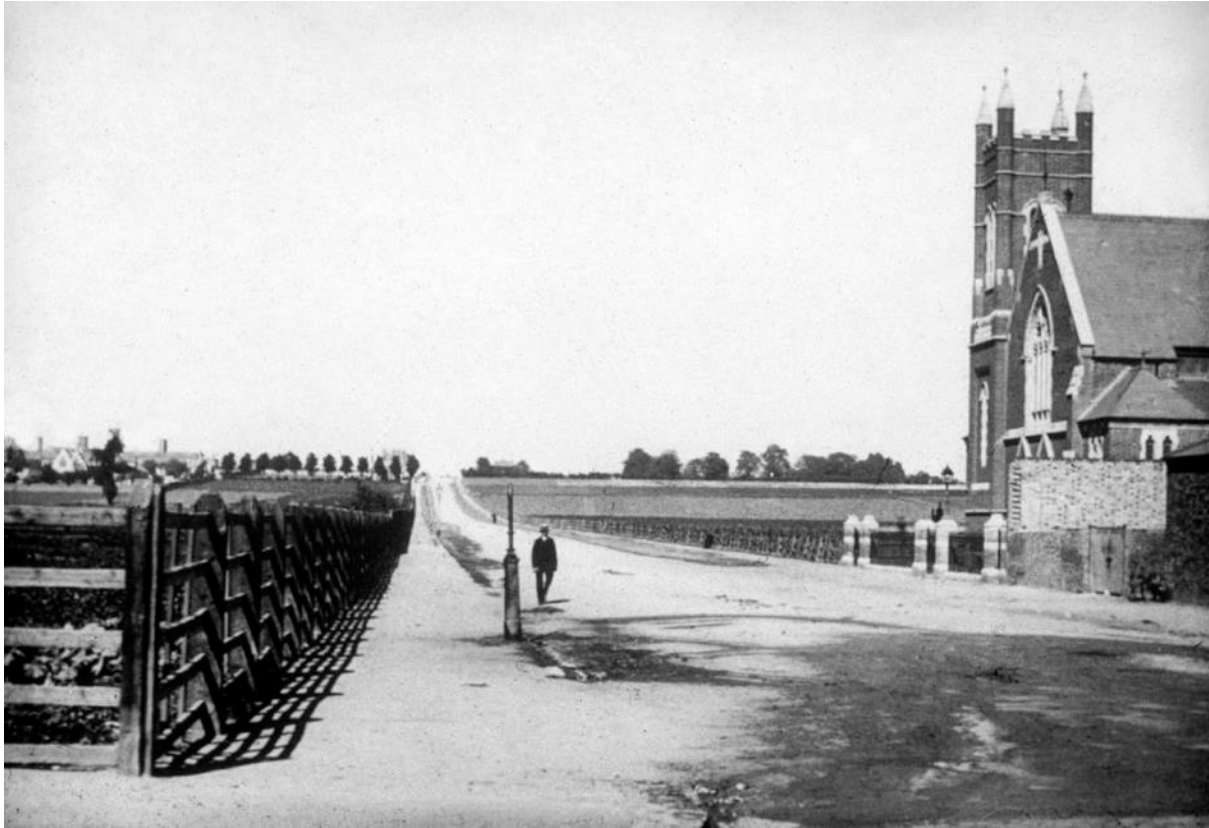




# Earlsfield – pre 19<sup>th</sup>C industrialisation



# Earlsfield Station - 1910

Station built 1886  
No 356 built 1896





# No 356 Garratt Lane in 2010



# Theatre pre 2014





# Foyer pre 2014



# Office pre 2014





# Redevelopment Catalyst





# 2012 Feasibility Study



by Steve Tompkins of Haworth-Tompkins

# 2012 Concept



Aedas Arts Team

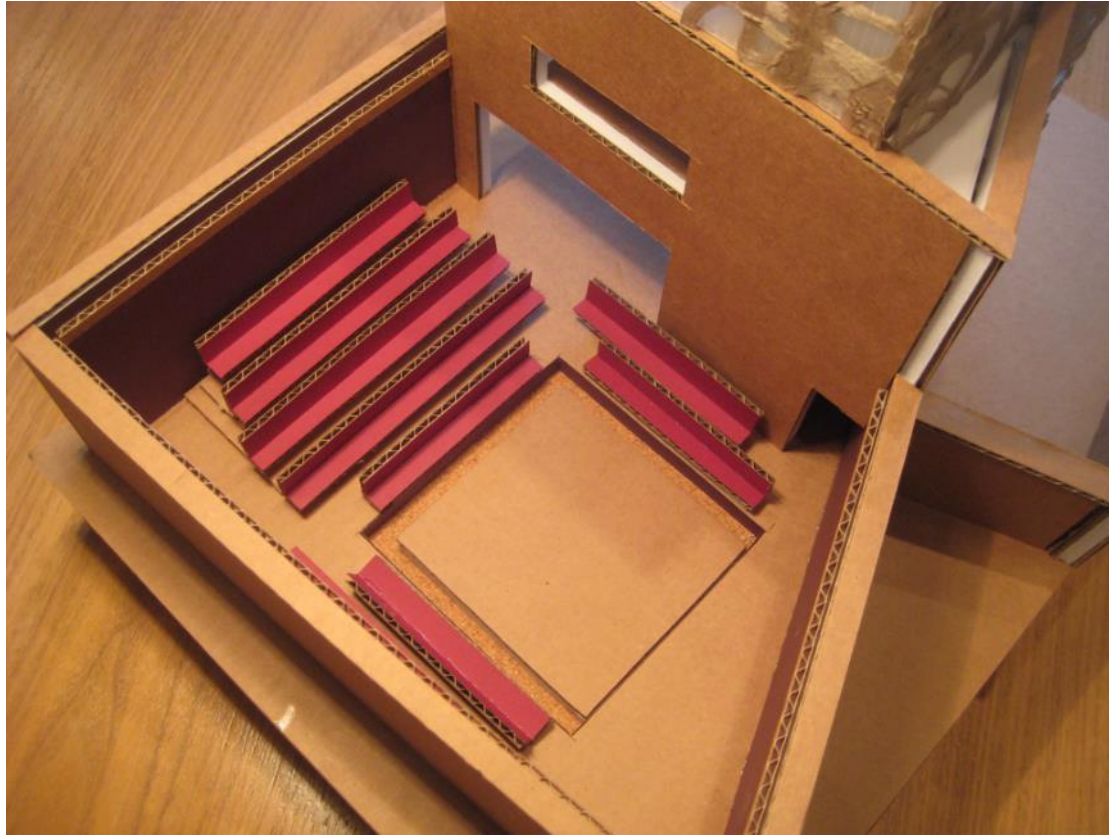
# Concept model



Balancing the space with ideas of identity and place



# Concept interior



# 2012 Evolving Design



# Section



Sectional Arrangement



# Construction 6 October 2014



# Demolition complete





# The Coconut





# Basement Piling



# Indian Artefacts Arrive



# Theatre takes shape





# Earth Floor Laid



# Completed Theatre



# Performance Space

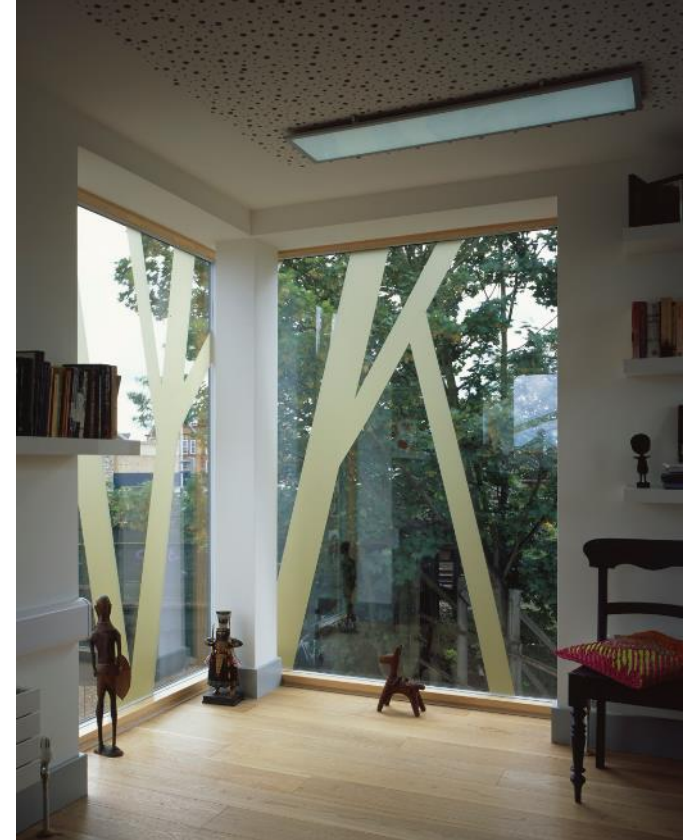




# First Floor – Rehearsal Room



# 2<sup>nd</sup> and 3<sup>rd</sup> Floors - Offices



# Basement Green Room





# Courtyard



# Party for the Builders





# Official opening 1 Sept 2016







# Rabindranath Tagore's "Where the Mind is Free" (1912)

Where the mind is without fear and the head is held high  
Where knowledge is free  
Where the world has not been broken up into fragments  
By narrow domestic walls

Where words come out from the depth of truth  
Where tireless striving stretches its arm towards perfection  
Where the clear stream of reason has not lost its way  
Into the dreary desert sand of dead habit

Where the mind is led forward  
Into ever-widening thought and action

Into that heaven, let my country awake



# Dialogue | Sustainability | Beauty

